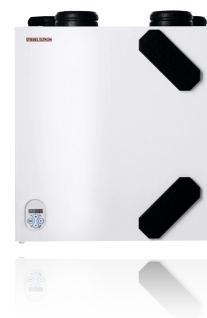


# Data Sheet: LWZ 70 E



## › LWZ 70 E



- › Energy efficient with up to 90% heat recovery
- › Designed for air flow rates of 50-180 m<sup>3</sup>/h
- › Compact space saving design
- › Quiet operation
- › Low power operation
- › Replaces indoor air with filtered fresh air from outside
- › Pollutants are removed from indoors
- › Prevents dust and pollen build up
- › Prevents condensation and mould through improved ventilation
- › Easily accessible design for filter replacement
- › Optional FEQ air quality sensor



# LWZ 70 E

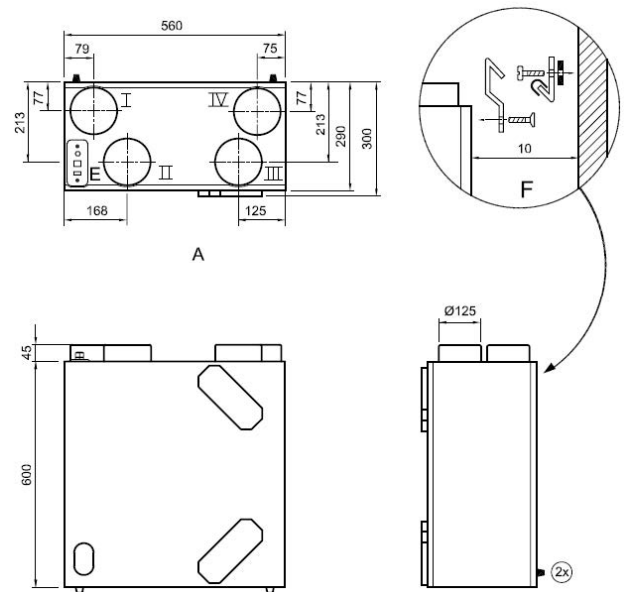
## PREMIUM CENTRALISED VENTILATION WITH HEAT RECOVERY

STIEBEL ELTRON's LWZ 70 E ventilation unit has been specially developed for ventilation in apartments. The crosscurrent heat exchanger recovers up to 90% of heat from the extracted air, while its constant flow fans are economical on energy.

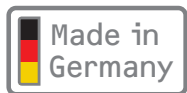
		TREND
<b>Model</b>		<b>LWZ 70 E</b>
		<b>233851</b>
Energy efficiency class		A
Power consumption	W	13-112
Heat recovery level up to	%	90
Air flow rate	m <sup>3</sup> /h	50-180
Height	mm	600
Width	mm	560
Depth	mm	290
Weight	kg	25



LWZ 70 E



Dimensions



STIEBEL ELTRON is committed to our policy of continual improvement, some features may have subsequently been changed or even removed. Our advisors will be happy to consult with you regarding the currently applicable equipment features. The images used in this data sheet are for reference only.